

BUCKS VOTES

**VOTING IS SO EASY
IN BUCKS COUNTY**



ANYONE CAN DO IT!

***A voting guide
Experience voting with
a touch of a finger***

VOTING MACHINE INSTRUCTIONS

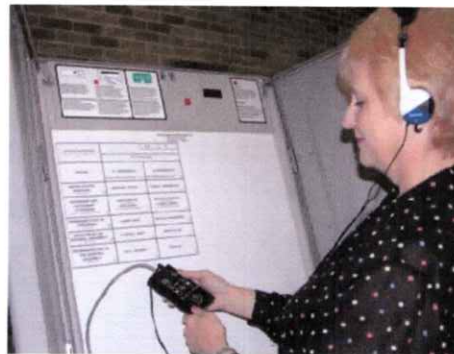
Step 1. Entering the machine

Part the curtain to enter. No lever is necessary, the curtain will fall closed behind you. The curtain is fastened to the machine sides, affording you both privacy and confidentiality while casting your ballot.



If you use a wheelchair, the voting machine will be lowered by the election officials before you enter. The entire ballot will then be accessible from your wheelchair.

Audio components are available for the visually-impaired voter to independently cast their ballot.



Step 2. The Ballot

The ballot is similar to the lever machines. The offices are listed in the first column. The political parties are listed in the first row at the top. Each candidate is listed in a separate box, in their political party column, across from the office they are running for.

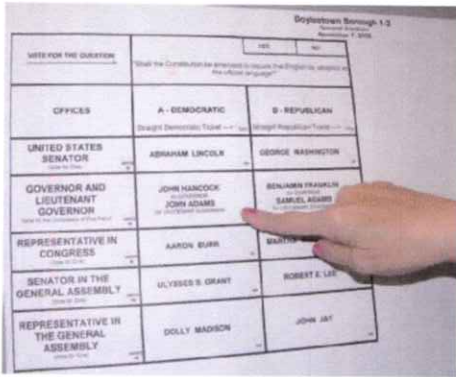
A red light blinking inside each office box indicates that you may vote for that office. After you select a candidate, the blinking light next to the office will go out. A solid light will appear next to your selected candidate. You may choose to vote for as many offices as you like.

November 7, 20

VOTE FOR THE QUESTION	YES		NO
	*Shall the Constitution be amended to require that English be adopted as the official language?		
OFFICES	A - DEMOCRATIC Straight Democratic Ticket —> <input type="checkbox"/>	B - REPUBLICAN Straight Republican Ticket —> <input type="checkbox"/>	
UNITED STATES SENATOR	ABRAHAM LINCOLN	GEORGE WASHINGTON	
GOVERNOR AND LIEUTENANT GOVERNOR	JOHN HANCOCK or JOHN ADAMS PRESIDENTIAL GOVERNOR	BENJAMIN FRANKLIN or SAMUEL ADAMS or JOHN ADAMS PRESIDENTIAL GOVERNOR	
REPRESENTATIVE IN CONGRESS	AARON BURR	MARTHA WASHINGTON	
SENATOR IN THE GENERAL ASSEMBLY	LYSSES B. GRANT	ROBERT E. LEE	
REPRESENTATIVE IN THE GENERAL ASSEMBLY	DOLLY MADISON	JOHN JAY	

Step 3. Selecting a Candidate or Issue

To vote for a candidate, press the number box next to your choice. The red light in their box will come on. To change a selection, press the number box again and the light will turn off. You can then make a new selection.



Step 4. Write-In Voting

Press the write-in button in the office box. Then press the large, red blinking light at the top of the machine. This will open the black shutter on the write-in window. Write your candidate's name on the paper in the window. Then pull the black shutter down over the name, closing the window. Repeat the process for each write-in.



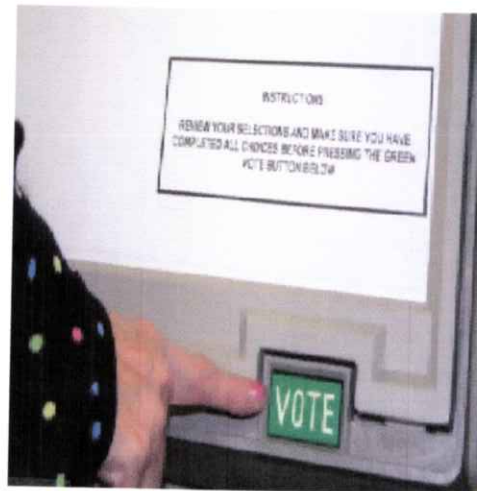
Step 5. Voting on a question

Ballot questions are located on the top, right side of the ballot. Press either **YES** or **NO**, to answer the question. The red light next to your choice will turn on to confirm your decision.

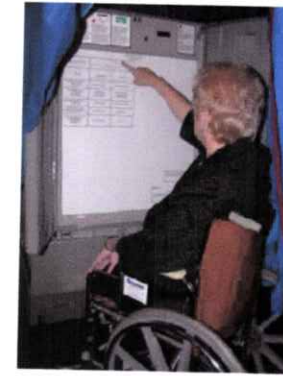


Step 6. Cast your ballot

After you have selected your candidates, and answered possible issue questions you can cast your ballot. Press the large, green **VOTE** button at the bottom right corner of the machine. All indicator lights will go out, and a low bell-tone will sound. You have now successfully cast your ballot.



A new era of voting has come to Bucks County.



A new voting system was implemented to comply with the 2002 Help America Vote Act (HAVA).

The new machines provide an accurate, user-friendly system that protects voter

privacy, and is cost effective.

"The new system also produces a paper audit trail that can verify all votes cast on each machine for a recount."

Commissioner Charles H. Martin
Chair, Bucks County Board of Elections

Voter Education: A partnership between the Bucks County Commissioners and the League of Women Voters

James F. Cawley, Esq., Commissioner, Chairman
Charles H. Martin, Commissioner
Sandra A. Miller, Commissioner

David M. Sanko, Chief Operating Officer



For more information, go to
www.buckscounty.org