



YOUR RADIO HAS ONE JOB: TO KEEP YOU SAFE



**MOTOROLA APX™ PORTABLE RADIOS
SAFETY REDEFINED.**

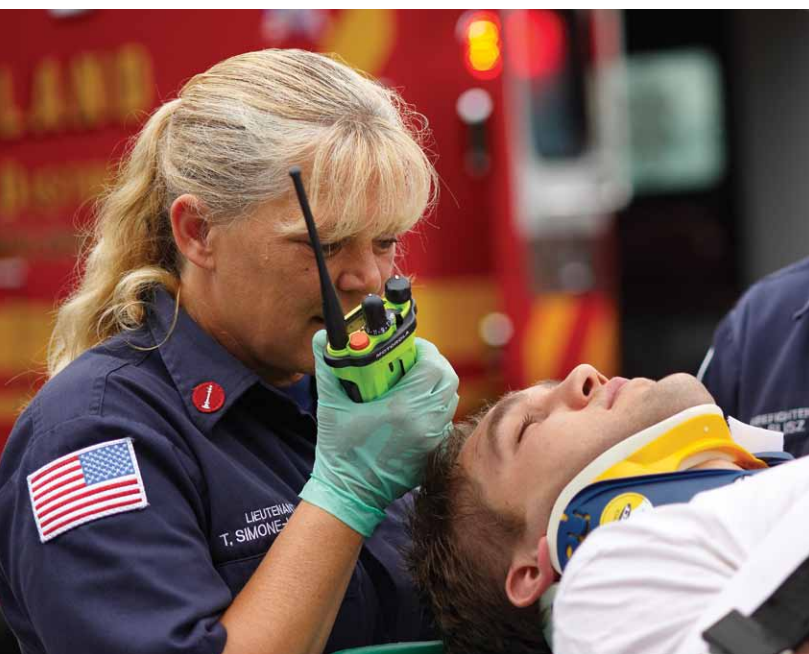


YOU ARE READY FOR THE NEXT CALL. WITH APX, SO IS YOUR RADIO.

In an emergency, other first responders may be ten feet away or ten miles away. When every second counts, public safety agencies need mission critical voice and data communications they can rely on to get the job done. At the heart of every mission is the ability to communicate in an instant to coordinate response and protect lives. So every two-way radio transmission is crucial and every radio has one job to do: keep you safe.

Motorola created the APX P25 mission critical series to redefine safety in portable communication. Every feature and function on an APX Portable is designed with its users in mind – from the rugged, easy to operate design, to the loudest, clearest audio – the result is the ability to keep your personnel and the community safer than ever before.

INTEROPERABILITY ON DEMAND



From street patrols to a multi-agency response, APX portables are designed to provide the highest level of interoperability, to efficiently manage mission critical voice and data communication in any environment. The APX portables can work across multiple digital and analog networks from conventional, to SMARTNET® and SmartZone® to ASTRO® 25, providing true interoperability. When multiband operation is needed, the APX 7000 provides seamless interoperability on demand through any two frequency bands.

ONLY APX PORTABLES MEET ALL THE CRITERIA THAT AGENCIES AND FIRST RESPONDERS DEMAND FOR SAFE AND RELIABLE COMMUNICATION IN ANY SITUATION.

RELIABLE VOICE AND DATA

AGENCIES DEMAND

- Voice communication that works every time, in any environment.
- Advanced systems to enter and receive data quickly and accurately.
- Voice and data in one radio, so personnel can reduce the equipment they need to carry.

APX DELIVERS

- Reliable voice communications.
- Real-time data.
- Secure end-to-end encrypted communications.

LOUD, CLEAR AUDIO

AGENCIES DEMAND

- Loud audio so every word is heard.
- Intelligible audio so every word is understood.
- Clear communications without background or ambient noise.

APX DELIVERS

- Best-in-class audio that is the loudest and clearest in the industry.
- 2 microphone dual-sided noise canceling technology.
- AMBE digital voice vocoder.
- Audio profiles for different environments.

EASY TO OPERATE

AGENCIES DEMAND

- Small, compact design with controls that are easy to use and locate.
- Simplified interoperability with legacy systems and multiple agencies.
- Portables that are easy to grip, hold, and operate with or without gloves.

APX DELIVERS

- Unique T-Grip design with well-positioned controls that are easily differentiated.
- Seamless interoperable communications with multiple frequency bands, Motorola legacy systems, P25 Phase 1 and P25 Phase 2 systems.
- Smallest P25 Phase 2 and multiband portable radios in the industry.

RUGGED DESIGN

AGENCIES DEMAND

- Performance in extreme environments.
- Reliable operation in every situation.
- Minimal replacement and repair.

APX DELIVERS

- 80 years of real-world product experience and testing.
- Meets or exceeds stringent MIL-STD specifications.
- Fully sealed high strength internal chassis for improved robustness.
- High impact, scratch resistant, optically pure glass display.



THE MOST COMPLETE LINEUP OF SAFETY-FOCUSED PORTABLES.

With budgets tight, agencies expect that every dollar invested must deliver maximum value and performance. From day one, every APX portable will meet your most demanding performance expectations.



APX 7000

- Multiband operation
- Best-in-class audio¹
- Future expandability

Premier portable with leading technology for the most demanding conditions. Ideal for agencies requiring multiband interoperability and future expandability.



APX 7000XE

- Multiband operation
- Best-in-class audio¹
- Extreme ergonomics

Designed for extreme environments with exaggerated controls and an extreme audio profile. Ideal for agencies requiring extreme ergonomics and multiband interoperability.



APX 6000

- Single band operation
- Excellent audio²
- Compact design

A smart Investment delivering leading edge technology in a compact design. Ideal for agencies requiring single band, future P25 Phase 2 efficiency.

	APX 7000	APX 7000XE	APX 6000
Channel Capacity	1250	96	870
System Personalities	100	100	100
Models	2	1	3
SmartNet/SmartZone/Omnalink	✓	✓	✓
P25 Operation	Phase 1 - FDMA Phase 2 - TDMA	Phase 1 - FDMA Phase 2 - TDMA	Phase 1 - FDMA Phase 2 - TDMA
Multiband Operation	✓	✓	
Outdoor GPS location	✓	✓	✓
Bluetooth Enabled	Option Board	Option Board	Option
Intelligent Lighting	✓	✓	✓
Radio Profiles	✓	✓	✓
Text Messaging	✓	✓	✓
Removable Memory	✓	✓	
POP25	✓	✓	✓
Voice Announcement	✓	✓	✓
Encryption	✓	✓	✓
OTAR	✓	✓	✓
Option slot	✓	✓	
Adaptive Noise Suppression	✓	✓	✓
Dual Microphones	✓	✓	✓
Dual Speakers	✓		
Rugged ³	✓	✓	✓
Colored Housings	✓	✓	✓
Factory Mutual (FM) Rating	✓	✓	✓

¹ Best-in-class audio – 2 mic noise suppression + 1 watt speaker

² Excellent audio – 2 mic noise suppression + 500 mW speaker

³ Rugged radios exceed industry standards (IPx7) for submersibility and provide a higher level of water protection – MIL-STD-810E, Method 512.3 Immersion.

ADVANCED SOFTWARE FEATURES

INTELLIGENT LIGHTING

Intelligent lighting uses color alerts to notify you of the radio mode, potential emergencies, or specific events.

RADIO PROFILES

Radios can be configured to adjust audio level, lighting and tones through user selected or automated options. Whether on surveillance or working in bright sunlight, you can customize settings as needed.

EXTREME AUDIO PROFILE

Intelligent 2-microphone noise reduction software and the latest AMBE vocoder dynamically adjusts for changing high noise environments.

TEXT MESSAGING

Text messaging offers a freeform or canned messaging solution so you can efficiently and discreetly send and receive messages to and from subscribers or dispatch operators.

UNIFIED CALL LIST

Consolidates all call lists underneath one unified list. You can easily access all information associated with a particular contact.

VOICE ANNOUNCEMENT

Voice Announcement allows you to navigate through channels/talk-groups and zones in the radio, while an audible, pre-recorded voice file provides a description of the selected channel or zone.

ADVANCED HARDWARE FEATURES

P25 PHASE 2 CAPABLE

Provides twice the voice capacity. You can add more users to your system without the need for additional frequencies or infrastructure.

MULTIBAND OPERATION

Multiple frequency bands supported with best-in-class transceiver specifications and performance.

SEAMLESS SCAN

Seamless scanning of multiple protocols including FDMA and TDMA systems and multiple RF bands.

GPS LOCATION

Integrated GPS receiver can transmit the outdoor location of an individual or vehicle to map based location software.

MISSION CRITICAL WIRELESS

Mission Critical Wireless is a unique Bluetooth® solution that provides an encrypted link to a rugged, high performance earpiece, to support different mission critical environments.

ENCRYPTION

Standard equipped with FIPS certified encryption hardware. Provides secure communications in a tamperproof solution.



FUTURE READY

EXPANSION SLOT

Ability to add option cards, such as Bluetooth® and other future data applications to upgrade to the latest applications.

MEMORY

Equipped with 64 MB of industrial grade internal memory and a removable memory MicroSD card slot. The removable memory card allows future expandability for growing technology needs.

PROGRAMMING OVER PROJECT 25

Motorola's POP25 solution allows subscriber radios to be programmed over the air via the ASTRO 25 systems while remaining in the field without interrupting voice operations.



“WE HAVE THE ADVANTAGE OF LEARNING FROM FIRST RESPONDERS AROUND THE GLOBE – IN DIFFERENT ENVIRONMENTS AND DIFFERENT TYPES OF SITUATIONS. SO WE CAN DESIGN RADIOS AND ACCESSORIES THAT EXCEED REAL-WORLD DEMANDS.”

Bruce Claxton, Senior Director, Design Integration

SAFETY DOESN'T END WITH THE RADIO

When you attach the battery, there should be no question that your radio will perform. A headset or earpiece should perfectly complement your radio's audio clarity and quality. That's why Motorola has designed a complete line of APX accessories for APX radios.

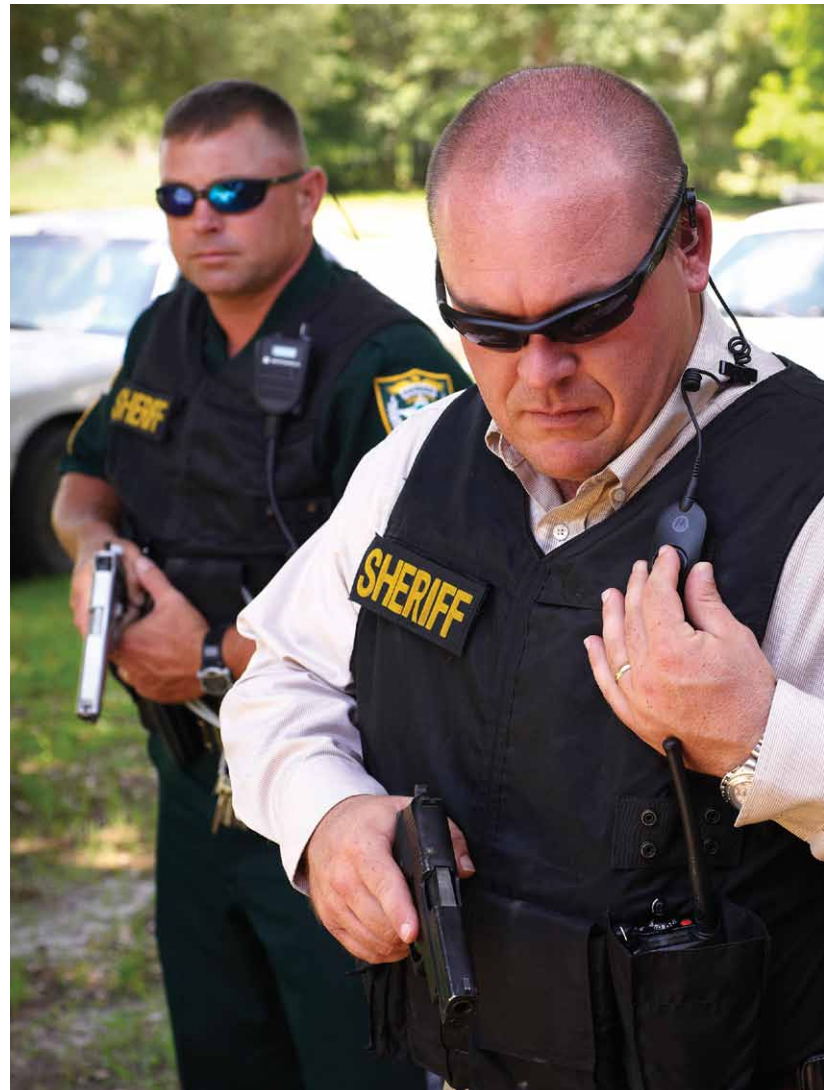
Every Motorola APX accessory has been designed and thoroughly tested to provide the same high level of performance you expect from your radio. For example, IMPRES™ batteries are uniquely designed to maximize talk-time and optimize battery cycle life—automatically.

To ensure that your APX radio meets the highest standard of performance, use of Motorola's APX accessories is vital to making sure your radio will perform as expected at the moment needed.

Our complete line of accessories include:

- IMPRES Remote Speaker Microphones
- IMPRES Headsets
- IMPRES Earpieces
- Mission Critical Wireless Earpiece
- IMPRES Batteries and Chargers
- Single and Dual-Band Antennas
- Carry Cases and Straps

For a complete list of APX portable radio accessories, see the APX Portable Accessory Catalog (RC-3-1006).



APX P25 TWO-WAY RADIOS SAFETY REDEFINED.



APX ONLINE. COMPLETE SPECS. 360 DEGREE VIEWS.

Go online to motorola.com/apx for more information about each of the APX Portables.

- Interactive 360-degree views of each model.
- Complete hardware specs, including Performance Characteristics, Physical Characteristics, and Radio Features.
- Complete list and photos of accessories.
- Downloadable product brochures and specification sheets.
- Downloadable white papers.

TECHNOLOGY THAT'S SECOND NATURE™

At the heart of every mission is the ability to communicate in an instant to coordinate response and protect lives. Today, Motorola is putting real-time information in the hands of mission critical users to provide better outcomes. Our powerful combination of next generation technologies are transforming public safety operations by strengthening the mission critical core with broadband connections, rich-media applications, collaborative devices and robust services. It's Technology That's Second Nature. To find out more, visit motorola.com/nextgen.

www.motorola.com/apx



Motorola, Inc. 1301 E. Algonquin Road, Schaumburg, Illinois 60196 U.S.A. www.motorola.com

MOTOROLA, MOTOROLA SOLUTIONS, and the stylized M Logo are trademarks or registered trademarks of Motorola Trademark Holdings, LLC and are used under license. All other trademarks are the property of their respective owners. © Motorola Solutions, Inc. 2011

RC-4-2022A