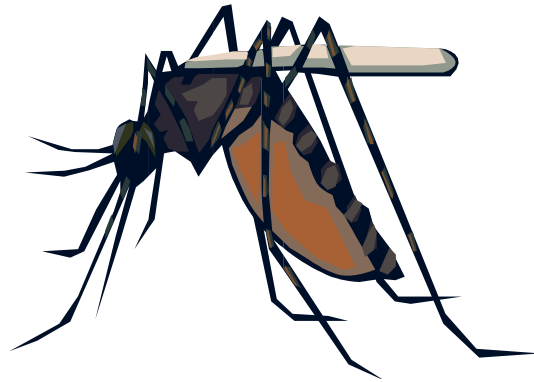


# **WANTED THE MOSQUITO**



**by the Bucks County Department of Health**

**Neshaminy Manor Center, Health Building  
1282 Almshouse Road  
Doylestown, PA 18901  
215-345-3336**

**Bucks County Government Services Center  
7321 New Falls Road  
Levittown, PA 19055  
215-949-5805**

**Bucks County Government Services Center  
261 California Road  
Suite 4  
Quakertown, PA 18951  
215-529-7000**

Whether you live in the country, city or suburbs, you may be bothered by mosquitoes. Besides being annoying pests, some mosquitoes can transmit certain diseases to man and domestic animals. If you know something about where mosquitoes lay their eggs, how they live, and what can be done to prevent and control them, you will be able to reduce the number of mosquitoes in and around your home.

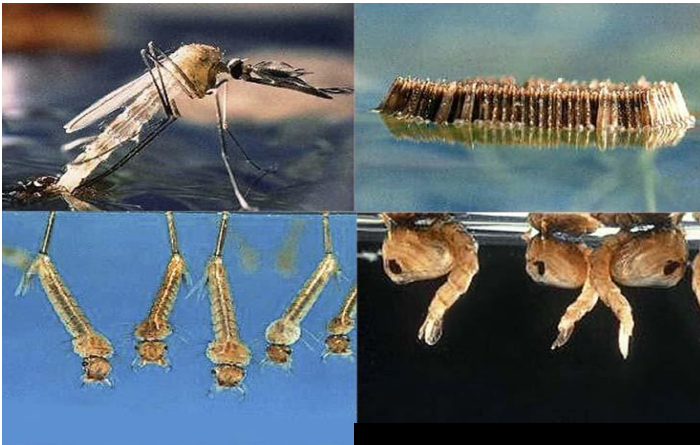
## You Can Prevent Mosquito Breeding

When you have found every water source on your premises that might be producing mosquitoes you can...

1. **DRAIN, EMPTY, FILL or SEAL OFF** the water source.
2. **Stock your pools or ponds with mosquito-eating fish (GAMBUSIA).**
3. **LARVAL CONTROL** is the most effective means of mosquito control.

## Water is Vial to Mosquitoes

Water is necessary in three of the four life stages of the mosquito. The eggs, larval and pupa stages are aquatic. The fourth stage is the adult mosquito which is familiar to nearly everyone. Control of adults once they have left the breeding site is difficult and costly.



The mosquito has four life cycle stages: (top, from left) adult and eggs and (bottom, from left) larvae and pupae. Three of the stages, eggs, pupae and larvae, are aquatic.

## PLACES WHERE MOSQUITOES CAN BREED AROUND YOUR HOME...

MOSQUITO SOURCE	WHAT TO DO
a. Containers of various sorts.....	Empty and invert, or dispose of.
b. Irrigated lawns and fields.....	Avoid over irrigation and drain pond areas.
c. Cesspools or septic tanks.....	Seal and cover openings so that adult mosquitoes cannot get in.
d. Ponds.....	Stock with fish and remove excess vegetation.
e. Bird Baths and Basins.....	Change water frequently.
f. House Cooler Drains.....	Use recirculating pumps, or connect to sewer.
g. Open ditches in residential area..	Drain to underground system, or outer outlet.
h. Dairy drains and their overflow ditches.....	Drain properly and keep free of vegetation.
i. Tree holes.....	Fill with sand or mortar, drain or spray as required.
k. Water under home or in basements.....	Drain or pump out if possible; otherwise spray as required.
l. Leaky faucets.....	Repair to eliminate dripping water.

---



---

### We Can't Do it All!

---



---

The Department's field staff is simply not large enough to permit us to go into the yards of all the houses in the County and search out mosquito breeding places. Therefore, we believe that people should get rid of any water-holding sources on their own premises, that would be potential breeding sources for mosquitoes so as to prevent large numbers of mosquitoes being produced right at home.

# **PROTECT YOURSELF**

## **Through Integrated Pest Management**

### **Inside Your Home:**

**Screening:** A fine screen (14 x 18 wires to the inch) is the most satisfactory for excluding mosquitoes. Window and door screens should fit tightly to be effective and doors should swing out and be self-closing.

**Insecticides:** Utilize only E.P.A. approved insecticides (pyrethrins, dichlorvos sprays or vapona, no pest strips.)

### **Outside Your Home:**

**Protective Clothing:** Denim and other closely woven heavy fabrics will give better protection than light or loosely woven garments.

**Insect Repellents:** There are several good insect repellents now on the market. Those containing diethyltoluamide (DEET) are best. People often use them when camping and fishing but they are just as effective at home. Observe directions on the label when using repellents.

### **Eliminate Breeding Sites:**

Drain or empty water containing basins or containers. Stock pools or ponds with mosquito larva eating fish.

**Insecticides:** Utilize only E.P.A. approved insecticides. For larval control consider, B.T.I., or methoprene. For adult control, consider carbaryl, dichlorvos, malathion or pyrethrin sprays.