



## **BUCKS COUNTY BOARD OF ELECTIONS**

Charles H. Martin, *Chairman*  
James F. Cawley, Esq., *Vice Chairman*  
Diane M. Ellis-Marseglia, LCSW

Deena K. Dean, *Director*

04/08

# *Voting Machine Instructions*



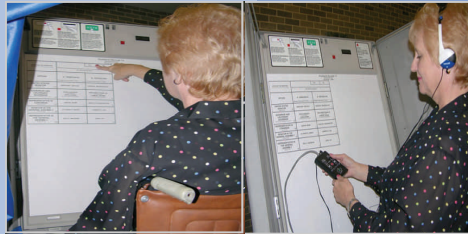
# **BUCKS VOTES**

## Step 1. Enter the Machine

Part the curtain to enter, and it will close behind you. You can vote for any offices where the lights are blinking.

### *Physically Challenged Voters:*

If you use a wheelchair, the voting machine will be lowered by an election official before you enter. The ballot will be accessible from your wheelchair. Audio components are available for visually-impaired voters to cast their ballot.



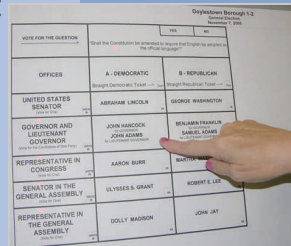
## Step 2. Understanding the Ballot

The ballot is similar to the lever machines. The offices are listed in the first column. The political parties are listed in the first row at the top. Each candidate is listed in a separate box, in their political party column, across from the office they are running for.

A red light blinking inside each office box indicates that you may vote for that office. After you select a candidate, the blinking light next to the office will go out. A solid light will appear next to your selected candidate.

## Step 3. Selecting a Candidate

To vote for a candidate, press the numbered box next to your choice. The red light in their box will come on. **To change a selection**, press the numbered box again and the light will turn off. You can then make a new selection.



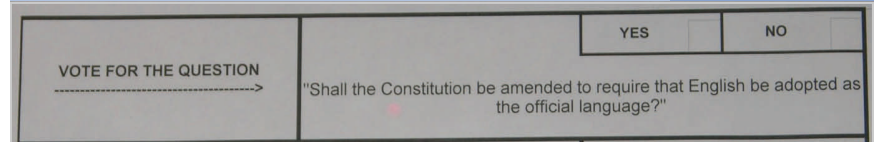
## Step 4. Write-In Voting

Press the write-in button in the office box located in the first column to the left of the ballot. Then press the large, red blinking light at the top of the machine. This will open the black shutter on the write-in window. Write your candidate's name on the paper in the window and pull the black shutter down over the name, closing the window. Repeat this process for each write-in.



## Step 5. Voting on a Question

Ballot questions are located on the top portion of the ballot. Press either **YES** or **NO** to answer the question. The red light next to your choice will turn on to confirm your decision.



## Step 6. Cast Your Ballot

After you have selected your candidates and answered possible questions, you can cast your ballot. Press the large, green **VOTE** button at the bottom right corner of the machine. All indicator lights will go out, and a low bell-tone will sound. You have now successfully cast your ballot.

