



Bucks County
Parks and Recreation

Pathways

NEWSLETTER AND PROGRAM GUIDE



FALL/WINTER 2011-12

www.buckscounty.org

General Park Information 3

Feature Article 4

Core Creek/Frosty Hollow Tennis 5

Frosty Hollow Tennis Center 6

Churchville Nature Center 7

Silver Lake Nature Center 8

Silver Lake/Peace Valley Nature Centers 9

Peace Valley Nature Center 10

Moravian Pottery and Tile Works/Fonthill 11

Tile Works/Peace Valley/Tinicum 12

Facilities 13

Park Locations & Activities 15

Facility Directory 17

Registration Information 18

Program Registration Form 19

Frequently Asked Questions 20

If you are not already on our mailing list or have a change of address or circumstance, complete the form below. Print legibly, and mail or fax to:

Bucks County Department of Parks and Recreation
 901 E Bridgetown Pike, Langhorne, PA 19047
 FAX: 215-752-1421

Please print legibly or we cannot add your name.

Name _____

Address _____

City _____

State _____ Zip _____

We welcome suggestions for the Pathways or programs. Also, for change of address, enter old name, address below:

Pathways

Published twice yearly by the Bucks County Department of Parks and Recreation, 901 E. Bridgetown Pike, Langhorne, PA 19047-1597. Telephone: 215-757-0571 or Fax: 215-752-1421. Hours of operation: Monday through Friday, 8 a.m. to 4:30 p.m. Website: buckscounty.org.

E-mail: parksandrecreation@co.bucks.pa.us.

The Bucks County Department of Parks and Recreation, established in 1953, is responsible for the acquisition, development, and preservation of open space and regional parks. The Department seeks in every endeavor to improve the quality of life and environment for all Bucks County residents, by working to enhance existing and projected recreational and cultural needs for our County.

The Department does not discriminate on the basis of disability in its programs, activities, or facilities.

COUNTY COMMISSIONERS

Charles H. Martin, *Chairman*
 Robert G. Loughery, *Vice Chairman*
 Diane M. Ellis-Marseglia, *LCSW*

PARKS & RECREATION BOARD MEMBERS

Nelson E. Clements, *Chairman*, Lowell Musselman, *Vice Chairman*, Todd Kowalski, *Secretary*, Edward Child, *Penrose* Hallowell, Gerald H. Crandley, *Ed Zielanski*, Mary Schweiker, Charles Raudenbush, Jr.

Executive Director: William M. Mitchell, CPRP
Editor: Marianne Dubresson



Charles H. Martin
Chairman



Robert G. Loughery
Vice Chairman



Diane M. Ellis-Marseglia
LCSW

A Message from the Bucks County Commissioners

Bucks County is filled with recreational opportunities of every kind. If you love the outdoors and enjoy the many diverse activities associated with fresh air, clean water, and open space, you'll appreciate all that our picturesque county has to offer. In concert with the county Parks and Recreation Department, we are dedicated to protecting, preserving, providing, and preparing outstanding recreational opportunities for the 625,000 residents of our county. We are equally proud of our stewardship of these resources.

Founded in 1953, the Bucks County Department of Parks and Recreation maintains three superb nature centers – Peace Valley, Churchville (currently in the midst of a “green” expansion), and Silver Lake. Among its more than 8,886 acres are many outstanding county-owned parks, including Tohickon Valley, Tinicum, Silver Lake, Ringing Rocks, Playwicki, Peace Valley, Lake Towhee, and Core Creek. These delightful county-owned and maintained parks are located in every corner of Bucks County. They offer biking and hiking trails, streams and lakes for fishing and boating, picnic areas and pavilions, ball fields and playgrounds, and open areas. If you own and ride a horse, you'll enjoy the Bucks County Horse Park in Revere, where natural trails are maintained just for your trail riding pleasure. Dog lovers and their pets abound at the Bucks County Dog Park at Core Creek.

The year 2012 will mark the 100th anniversary of the construction of the world renowned Moravian Pottery & Tile Works in Doylestown. Today, Henry Chapman Mercer's vision continues to thrive at the only county-owned tile works in the United States.

On behalf of our Parks & Recreation, General Services and Park Ranger staff, we encourage you to take advantage of the natural – and historic – pathways surrounding us on a daily basis. For more information about the Bucks County Parks & Recreation system, please visit the official county website, www.BucksCounty.org.



Did You Know?

Park Reservations

You may contact the main office in Core Creek Park, Langhorne, at 215-757-0571 Monday - Friday 8 a.m. to 4:30 p.m. for the following information:

Renting one of the County's cabins, campsites, pavilions, or picnic groves, and their availability: Next year's rental reservations are accepted beginning the first business day after New Year's Day for cabins, campsites, pavilions, and picnic groves.

You may also contact us for general information regarding any of the county's many recreation programs and facilities, special events, historic facilities, nature centers, and other services.

Please call the main office for information on renting a Lower, Central, or Upper Bucks County park or area of a park for a wedding, family or work-related event, athletic programs or for any other purpose. This includes special events in the following parks and facilities:

Core Creek Park, Silver Lake Park, Playwicki Park, Oxford Valley Pool, Frosty Hollow Tennis Center, Core Creek Tennis Center, Peace Valley Park, Tohickon Valley Park, Tinicum Park, Lake Towhee Park, Tinicum Park Barn, and the grounds at the Moravian Pottery and Tile Works.

Information about Bucks County Parks rental reservations, programs, and facilities is also available at our website, www.buckscounty.org.

For your convenience, cash, checks VISA and Master Card payments are accepted.

Persons with Disabilities

Persons with speech or hearing disabilities can use the Pennsylvania Telecommunications Service (TDD) toll free at 800-654-5984 to make contact with the Department at 215-757-0571. This service offers specially trained Communications Assistants to help you get information on our park system programs and facilities. The toll free number is available 7 days a week, 24 hours a day.

Discount Tickets

Throughout the year, the Department offers discount tickets to ski and amusement parks.

Winter tickets (December through March 15) include Jack Frost/Big Boulder, Blue Mountain, Camelback, Elk Mountain, Bear Creek, and Sno.

Summer tickets (May through September, or later) include: Busch Gardens, Dorney Park, Dutch Wonderland, Hershey Park, Morey's Piers, PA Renaissance Faire, Sesame Place, Six Flags (Great Adventure), Camelbeach, Knoebels and the Adventure Aquarium, Longwood Gardens, Philadelphia Zoo, and Ride the Ducks Philadelphia.

Important Park Rules

Along with other park rules, **SWIMMING AND ALCOHOL ARE NOT PERMITTED IN ANY COUNTY PARK with the exception of swimming which is permitted only at Oxford Valley Pool and Tohickon Valley Pool.**

Stover-Myers Mill Restoration Update

When the Stover-Myers Mill was purchased by the County of Bucks in 1968, the focus was on restoring and preserving the physical structure and to provide guided tours of the four floors of original milling equipment to visitors. A dozen years later, that mission was changed to one of restoring the mill to an operational condition, with grain milling demonstrations, using original equipment, viewed by a new generation of visitors. Now, 30 years later, that mission is about to be fulfilled as a result of major restoration work on the mill machinery and support systems. The most significant item has been the dismantling and reassembly of the frame supporting three runs of millstones. Along with that, the millstones have been re-set, and one run will operate, temporarily, by a motorized system. Future phases will address the millrace, procurement of a water turbine to power the stones, and the turbine penstock. Visitors will be able to take a step back in time and experience stone milling of corn when the mill re-opens in the spring of 2012.

Funding for the restoration has been provided by Community Development Block Grants, by a Pennsylvania Historical and Museum Keystone Preservation Grant, and by the County of Bucks.

For information, contact Charles Yeske, Historic Properties Manager, 215-348-6627 or cjyeske@co.bucks.pa.us. Volunteers to assist will be welcomed!



Stover -Myers Mill



Lifting a 2300 lb. runner stone



Hoisting the drive shaft



Millstone frame with stones removed



Raising a turbine shaft with two drive gears



Removing the top sill of the millstone frame



Bucks County Tennis Association Programs

These programs are held in partnership with the **Bucks County Tennis Association, Inc. (BCTA)** at Core Creek Tennis Center, Woodbourne Rd., Langhorne, and Frosty Hollow Tennis Center, New Falls Rd., Levittown. The programs implement the games-based approach to teaching tennis and the QuickStart format -fast and fun ways to learn tennis or improve your game. Limits: Min. 4; Max. 16 participants. Loaner racquets available.

To register online or download a mail-in registration form, log onto www.buckscountytennis.usta.com or for more information, call (215) 322-7020. ****Do Not Use the Registration Form in this Newsletter****

Youth and Adult Learn, Practice & Play!

Participant Fee & Recommended Ages:

Pee Wees* (ages 4–6): \$60
 Little Aces** (ages 7–9): \$65
 Juniors ** (ages 10–13): \$65
 Beginner/Intermediate Teens/Adults (ages 14+) : \$60
 Adaptive Tennis for Ambulatory and Wheelchair Players: \$60
 Cardio and Advanced Drill (ages 13+): \$60

*Fee includes team T-shirt ;

**Fee includes T-shirt and Team Tennis Challenge on Saturday, Oct. 16, 2:00 –4:00 p.m. Site: Core Creek Park

Location: Core Creek Tennis Center

Mondays, Sept. 12–Oct. 10 (Rain date: 10/17)

Pee Wees : 4:45- 5:30 p.m.

Little Aces: 5:30—6:30 p.m.

Tuesdays, Sept. 13–Oct. 11 (Rain date: 10/18)

Juniors: 4:30—5:30

Beginner/Intermediate Teens/Adults/: 5:30–6:30 p.m.

Location: Frosty Hollow Tennis Center

Tuesdays, Sept. 13–Oct. 11 (Rain date: 10/18)

Pee Wees (ages 4–6): 5:15-6:00 p.m.

Little Aces (ages 7–9): 6:00-7:00 p.m.

Thursdays, Sept. 15–Oct. 13 (Rain date: 10/20)

Juniors (ages 10–13): 5:30-6:30 p.m.

Adult Beginner/Intermediate: (ages 14+): 6:30-7:30 p.m.

Cardio and Advanced Drill: 7:30-8:30 p.m.

Saturdays, Sept. 17–Oct. 15 (Rain date: 10/21)

Adaptive Tennis: 11:00 a.m.—noon

Fall Doubles League

Enjoy weekend doubles at a set time and place. Sign up with or without a teammate, and the BCTA will try to find you a tennis partner.

Location: Core Creek Tennis Center

Skill level: Advanced beginner (2.5–3.0); Intermediate (3.5–4.0)

Saturdays: Men: Sept. 10–Oct. 22 (9:00–10:30 a.m.)

Saturdays: Women: Sept. 10–Oct. 22 (10:30 a.m.–noon)

Sundays: Mixed Doubles: Sept. 11–Oct. 23 (10:30 a.m.–noon)

Fee: \$30/team

Pre-High School Training & USTA Jr. Team Tennis

Ideal for kids 14 & under aspiring to play high school tennis! Co-ed teams of 4-6 players practice for 90 minutes each week followed by home and away match play Saturday afternoon from mid-September–October. Tentatively Core Creek team practices will be Wednesday evenings and Frosty Hollow team practice will be Tuesday evenings.

Fee: \$85 (plus uniform, USTA fees and membership)

QuickStart Tennis for All Ages!

Use/develop your tennis skills and network with QuickStart Tennis for all ages! Shorter courts and modified balls make this absolutely perfect for mature players hampered by injuries and limited mobility.

Location: Frosty Hollow Tennis Center 7:00-8:00 p.m.

Tuesdays, Sept. 13–Oct. 11 (Rain date: 10/18)

Fee: \$25

Celebrate Tennis Night in America

Tennis Night in America is an annual nationwide celebration that launches a month-long series of special tennis events. The USTA and local facilities across the country will host Youth Registration events for upcoming community spring and summer tennis programs throughout the month of March as part of the USTA's largest youth tennis recruitment effort. The 2012 festivities officially launch on Monday evening, March 5, with the best stars in tennis competing live in the BNP Paribas Showdown at Madison Square Garden in New York. For more information on local programs and registration locations, visit: www.tennisnight.com in January 2012.

The Bucks County Department of Parks and Recreation is proud to support Tennis Night in America

To register for programs on this page, log onto: www.buckscountytennis.usta.com.

****DO NOT Use the Bucks County Parks and Recreation Form In This Booklet To Register ****

The BCTA is a non-profit organization dedicated to providing affordable, quality tennis programs on public parks throughout Bucks County. BCTA is a registered member of the U.S. Tennis Association.



Interested in more Bucks County tennis?

Log onto:

www.buckscountytennis.usta.com for updates, special events and other tennis news. Don't miss the fun!



Tennis

With 6 out of 10 courts lit, Frosty Hollow Tennis Center in Levittown, offers individual play as well as various programs. Seasonal memberships are available. Members are eligible for guest and league discounts, and do not pay court usage fees. Non-members pay a court usage rate by the 1^{1/2} hours. Also available for rent are a lobster machine and ball hoppers.

Contact the Tennis Center at 215-949-2280 during the May to October season to obtain information on memberships, court usage, programs, and reserving a court. To obtain league discounts, you must either be a member or apply for membership when registering for leagues. Call the Administrative Office at 215-757-0571 during the off-season for further details.

Also inquire about Core Creek Park Tennis Center with 8 unlit courts open sunrise to sunset, year-round.

<u>Memberships</u>	<u>Season Pass</u>
Family (up to 4)	\$255
Single (18+)	130
Unmarried child (living home under 18)	55
Junior Single (not living home under 18)	95
Senior Single (60+)	95
Senior Couple (both 60+)	165
Senior Early Bird (60+, 8 a.m.-Noon)	70

<u>Court Usage</u>	<u>By 1-1/2 Hr</u>
M-F (Day)	\$8.00
M-F (6 p.m.—Closing)	11.00
Sat., Sun., Holiday (Day)	9.50
Sun., Holiday (6 p.m.—Closing)	12.50

<u>Guest Playing with Member</u>	<u>Singles</u>	<u>Doubles</u>
1-1/2 Hr (Day)	\$3.50	\$2.50
1-1/2 Hr (6 p.m.—Closing)	5.50	4.50



Private and Semi-Private Tennis Lessons

Program Name:	Private and Semi/Private Tennis Lessons
Location:	Frosty Hollow Tennis Center New Falls Rd, Levittown or Core Creek Park Tennis Center, Langhorne
Ages:	8+ Open to all levels of play
Times:	By appointment only, call 215-949-2280
Fee:	\$45/person /hour/private lesson \$28/person/hour/semi-private lesson

USA Team Tennis Adult Leagues

Join men's, women's, mixed singles and mixed doubles. Leagues are geared to different levels of ability. Play one match per week every week for seven weeks, followed by one week of playoffs. Limited flexibility allowed for vacations and weather. Register on p. 19

Name:	Adult Leagues
Location:	Frosty Hollow Tennis Center New Falls Rd, Levittown
Ages:	High School and Adults
Limits:	To qualify for member discounts, you must be a member. See below for fees and p. 17 for membership information.
Contact:	League Director, Pat McLaughlin 215-638-4385, for changes in, or additions to, sessions.

Sessions:

01 Sun 9 a.m.	Men's Doubles
02 Sun 6 p.m.	Mixed Doubles
03 Mon 6:30 p.m.	Men's Singles 3.0
04 Tue 6:30 p.m.	Women's Doubles
05 Wed 6:30 p.m.	Men's Singles 3.5
06 Thu 6:30 p.m.	Mixed Doubles
07 Fri 6:30 p.m.	Women's Singles
08 Sat 9:00 a.m.	Men's Singles 3.5

Dates: Fall: Aug. 22 -Oct. 23

Start dates may be delayed due to weather.

Fees:	<u>Per Person/Session</u>	<u>Adults</u>	<u>Youth</u>
Singles	Member	\$35	\$30
Doubles	Member	\$17.50	\$15
Singles	Nonmember	\$70	\$65
Doubles	Nonmember	\$35	\$30

215-357-4005
www.churchvillenaturecenter.org



Lenape Village Tours

Sunday, September 4 - Oct. 23

See a working Lenape Village as it was in the 1500's. Try your hand at doing some of the hands-on activities, such as corn pounding, Lenape games, hunting, scraping a hide, fire making, and rope making.

Every week there will be a different craft or skill featured. Come out and see how the Lenape learned from nature as they used everything they needed for survival from nature and always gave something back. They lived in harmony with nature for thousands of years before the Europeans came.

Fee: Adults & children 4 & up \$5.00
Children under 4 are free

Pre-registration is required.

Autumnal Equinox Hike & Campfire

September 23, 7:30 p.m.

Join us as we welcome the change of seasons. After today, our days shall keep getting shorter and shorter. Come find out why during this evening family program. The night includes an evening hike followed by a campfire with marshmallow.

Reservations are Required
Fee: Adults \$5 & Children \$3

Lenape Fall Cultural Festival

October 1 & 2, 10:00 a.m.-5:00 p.m.

Core Creek Park, Langhorne

NEW!

Come on out to our Autumn Festival at Core Creek Park in Langhorne. There will be a variety of activities for all ages to enjoy, such as children's crafts and games, hayrides, pumpkin painting, craft exhibits and more.

Autumn is a time many of us associate with the Native American peoples of our country. The Churchville Nature Center would like to invite you to come and connect first-hand with the Lenape people who have called Bucks County home for centuries, as well as their fellow Native American neighbors from around the country at our first ever Lenape Village Cultural Festival at Core Creek Park.

The nature center's Lenape Village will be on display teaching about the life of the Lenape in the 1500's prior to European contact. Topics such as family life, clothing, games, fire making, crafts and more will be covered. Also present will be local Lenape, Cherokee, Lakota, Seneca, Osage and many more Native Americans who will share their culture, dances, food and much more, including inviting the public to do social dancing with them. There will be games & crafts for the kids, hands-on activities, vendors and hayrides throughout the day.

Bring the family and join us for this one-of-a-kind Fall Festival! Fee: \$5.00 ages 4+, Free for ages 3 and under

Hawk Watch & Hike

October 10, 7:00 a.m.

It is time once again for our annual excursion to the Appalachian ridge for the fall hawk migration. We will hike about a half-mile up to Bake Oven Knob for some early morning viewing of migrating raptors, and then about 2 miles to the lofty perch of Bear Rocks where we will spend a leisurely lunch, watching yet more hawks, vultures, and possibly falcons and eagles riding the thermals southward.

Fee: Members \$10 & Non-Members \$14
Leader: Marlin Corn, CNC Naturalist

Brandywine Canoe & Museum Trip

October 16, 7:00 a.m.

Join CNC and the Appalachian Mountain Club for one of our favorite fall paddling trips down the historic Brandywine River in Chester County. The group will be stopping at the Brandywine River Museum for lunch and a tour of the museum. *After the trip, participants are invited to join the leader for a soup and bread dinner.*

Admission to the museum is included in the trip fee. Canoes, Paddles & Preservers are provided. Bring a bag lunch/beverage and clean, dry shoes for the museum tour
Fee: Members \$26 & Non-Member \$31, Led by Barb & John

Star Party Campfire

October 21, 7:30 p.m.

Come and explore the nighttime sky during our Fall campfire program. Weather permitting, we will view constellations and other celestial wonders with both our naked eye and a telescope. The planet Jupiter should be visible and offer good views through a telescope. Star finder charts will be available for use. A campfire and marshmallows will finish off the night. This program is dependent on good weather and clear skies.

Reservations are Required
Fee: \$5 adults, \$3 for kids under 12

Eagle Excursion

December 18, 8:00 a.m.

Join us as we celebrate the winter solstice in the midst of a large number of our most regal of raptors; the bald eagle. On our annual pilgrimage to the Conowingo Dam, we see scores of bald eagles, many at close range. After a morning of watching eagles, black vultures, herons, and other impressive birds at the dam, we will eat lunch and then take a leisurely stroll along the bank of the Susquehanna River in search of other interesting birds and wildlife.

Fee: Member \$10 & Non-Member \$14
Leader: Marlin Corn, CNC Naturalist

215-785-1177 www.silverlakenaturecenter.org



Saturday Morning Bird Walks
Every Saturday, Sept. thru November and March thru June
7:30 a.m. - 9:00 a.m.

For novice and experienced birders, come out and learn to identify our local birds. Bring binoculars, if you have them, and dress for the weather. This is a free event.

Volunteer Work Days
1st Saturday of Each Month

Help us maintain our grounds and Visitors' Center. Give us four hours and we'll give you lunch!
 Please call 215-785-1177 to register.

Sunday Strolls
Every Sunday, 2:00 p.m. - 3:00 p.m. FREE

If you would like to learn more about the park, but are not even sure where the trails lead, come take a walk with our Naturalist. A different fun topic will be covered each week, appropriate for the season.

Birding Field Trips
Saturday, Sept. 10-Birds of Cape May and Saturday, November 19-Birds of Brigantine

Call the nature center or visit our website to pre-register and/or for other upcoming birding trips.
 Fees per trip: \$14 member; \$18 non-member

Bird Seed Sale
October 8, December 10, February 11
10:00 a.m. -3:00 p.m.

Stock up on seed to feed our feathered friends! Please call 215-785-1177 to place orders at least 10 days before the sale.

Kayaking AND Hiking Excursions
Friday, October 29 7:30 p.m.

Please visit our website or call 215-785-1177 for dates, locations, and fees.

Nature Photography Workshop
Sunday, October 30th, 9:00 a.m. - 11:00 a.m.

Would you like to learn to take better nature pictures? Bring your camera, any camera will do, and we will spend a couple hours finding, composing and taking nature pictures at the Nature Center. Our resident historian/photographer, Clarence King will be leading this adult-level workshop. Pre-registration/pre-payment is required. Please call 215-785-1177 to register early as space is very limited. Fee: \$8 member; \$11 non-member.

38th Annual Focal Planes Photo Contest
February 18

Entries must be received by February 5. Awards Ceremony will be held on February 19. Please call 215-785-1177 for additional details or visit silverlakenaturecenter.org for information/details.

Concert in the Woods With Marc Cormican

A tribute to John Denver
Silver Lake Nature Center
Sat. Nov. 17, 7:30 p.m.

Silver Lake Nature Center is proud to welcome, all the way from Kentucky, Singer/songwriter, Mark Cormican, to do a concert here at our beautiful outdoor amphitheater! Mark is known not only for his beautiful renditions of John Denver's music, but also for his own. We hope you will join us under the stars on this special fall evening. (Concert will be indoors in case of inclement weather.) Please call 215-785-1177 or visit www.silverlakenaturecenter.org for tickets and information.

NEW!

Pinecone Pals

Silver Lake Nature Center
Offered Twice Each Month!

9/14,24; 10/5,22; 11/9,19; 12/7,17; 1/11,21; 2/8,18; 3/7,17
10:00 a.m.-11:00 a.m.

Three to five-year-olds and one of their favorite caregivers are invited to join "Pinecone" PattiAnn as we enjoy crafts, stories, activities, walks on our trails, and camaraderie! Each session features a different theme. Our fees are \$6 per child with an adult, per session for Friends of Silver Lake members; \$9 for non-members. Pre-registration is required to attend. Please help us spread the word about this fun, educational program now offered one Wednesday and one Saturday each month!

For more information and/or to register, please contact PattiAnn at the Center at palynn@co.bucks.pa.us or 215-785-1177 Ext. 12.

Silver Lake Green Fest

Silver Lake Park
Saturday, Oct. 1 11:00 a.m.-4:00 p.m.
FREE

Meet with vendors who provide "green" products you can use in your home or business! See a live animal show! Learn about buying local foods and healthy products! Get ideas from exhibitors, speakers and demonstrators! Enjoy fun activities for the whole family! Refreshments will be sold by vendors and the Nature Center!

Enjoy LIVE MUSIC by the Wissahickon Chicken Shack!

Calling all "Green" vendors! *Demonstrate how your business is becoming more environmentally friendly. Contact the Nature Center for more info on how to become a vendor. Sign up by September 15th for the Early Bird Rate!

For more information, call the Nature Center at 215-785-1177 or visit www.silverlakenaturecenter.org.

Solar Bus Tour

Peace Valley Nature Center
Chapman Rd., Doylestown
October 8, 9:30 a.m.- 4:00 p.m.

A local expert will accompany us on our bus to solar homes, community facilities, and businesses in our region. You will be inspired by the power of solar and alternative energies!

Solar/alternative energy vendors will be on hand pre-trip and at lunch. Choice of meat or vegetarian lunch included.

Cost: \$25 per person includes transportation and lunch. Mail check made out to "The Friends of PVNC" to Peace Valley Nature Center, 170 N. Chapman Road, Doylestown, PA 18901

Attn: Solar Tour or register at the nature center Tuesday-Sunday from 10:00 a.m.-5:00 p.m.

Advanced registration only-required.

Meet: At Peace Valley Nature Center's solar building at 9:30 a.m. sharp. Parking will be in the overflow field unless otherwise noted. For more information contact Craig Olsen:

caolsen@co.bucks.pa.us or 215-345-7860



Winter Get Out and About

Peace Valley Nature Center
Chapman Rd., Doylestown
Sunday, February 5 1:00 p.m.-2:30p.m.

NEW!

Program for all ages! A great way to break that cabin fever! From us (humans) to groundhogs, chipmunks and amphibians, we will discover some amazing facts. Learn about these wonderful adaptations, create some crafts and enjoy activities that highlight this time when our part of the world begins to awaken to the coming of spring. Don't forget your boots and warm clothes for a journey down the trails.

\$5 (\$3 members)

Maple Sugar Festival

Peace Valley Nature Center
Chapman Rd., Doylestown
Saturday, March 3 11:00a.m.-1:30p.m.

The sap is running! Travel to the sugarbush to collect some sap. Ongoing educational walks. We will discuss the historical significance of this sweet bounty as well as the method for processing. Warm by the fire and come inside for Maple Cotton Candy and some tasty waffles with Maple Syrup. No fee for the walk. Maple treats and waffles available for purchase. All funds support our environmental education programs.

215-345-7860
www.peacevalleynaturecenter.org



Bird Walks

Saturday Mornings, 8:00 a.m.- 10:00 a.m.

Join birders of the area for an informal and informative walk.
 All levels of experience welcome. Hone your skills or learn new skills.

Gosling Gang (ages 4-6 with caregiver) and Kit Crew (ages 2-3 with caregiver)
10:00 a.m. - 11:30 a.m. Fee: \$55 (\$45 members)

Accompanying siblings under 2 - no charge Limit 2 children per adult
 Tuesdays - September 20,27, October 4,11 (foul weather date October 18)
 Wednesdays - September 21,28, October 5,12 (foul weather date October 19)

Spider's Tea Party

Sunday, October 16 1:30 p.m. FREE

Bring along your favorite stuffed pal and join us for tea (juice and crumpets (snack food). We will listen to some creepy stories and tales read by Mrs. Spider. We will then go out and search for some real spiders and their relatives.



Gaggles of Ghosts and Ghouls

Friday, October 21, 6:30 p.m. - 9:00 p.m. Fee: \$5 (\$2 members)

Led by our somewhat ghoulish teacher naturalists, you will be led on an eerie walk through the trails of PVNC. Along the way you may meet some "creatures" that will expose some of the myths about the creepy and frightening nature of cats, rats, bats, snakes, ghosts, and other things that go bump in the night. After the walk, relax at our warming fire with toasty, gooey marshmallows. No pre-registration necessary. Walks are ongoing throughout the evening. Groups are welcome.

NOT RECOMMENDED FOR CHILDREN UNDER 7 YRS. OF AGE

Treats for the Birds!

Saturday December 10, 10:00 a.m. - 11:00 a.m.

Fee: \$10 (\$5 members) Limit 25 participants

Hand-made gifts for the bird aficionados on your list! Shapes and sizes to satisfy the most discriminating birds in your yard.

A squishy molding time using suet, peanut butter and other fine ingredients.



Owl Prowl

Saturday, March 10, 4:00 p.m. - 7:00 p.m. FEE: \$13 (\$9 members)

Visit various areas of Peace Valley searching for owls. Hopefully we shall see four species and be able to call in an owl.
 Advanced registration and payment required

Fonthill Park Family Holiday

Including the Moravian Pottery and Tile Works
130 Swamp Rd., Doylestown
December 4, Noon-4:00 p.m.

Start your family holiday festivities with a visit to Fonthill Park. The Moravian Pottery and Tile Works and neighboring Fonthill Castle will open their doors to seasonal fun for the younger crowd.

Santa will be seated next to a roaring fire at the Tile Works to hear children whisper their wish-lists of toys. A huge tree will await kids to bring homemade ornaments to hang on its branches as live music fills the air. Free self-guided tours of the museum are also available, with ceramists demonstrating tile making. Complimentary hot chocolate and tasty cookies will be served, and the tile shop will offer gift suggestions.

At Fonthill Castle, the big entry door will open for a special free ground floor open house tour of Henry Mercer's home. Decorated for the season, its unique architecture and amazing tile collection will fascinate visitors, and then on to the Terrace Pavilion for cider, cookies and a holiday craft making project which will hang beautifully on trees at home or on the Tile Works' tree.

Due to space restrictions, strollers will not be allowed inside the buildings. Don't forget to bring your camera to capture the craft making fun and the visit with Santa. For additional information call either the Tile Works at 215-348-6090 or Fonthill at 215-348-9461.



3-Day Tile/Mosaic Workshops

This three day workshop covers all the basic processes used by the Tile Works to produce decorative tile, mosaics, quarry tile, and plaster molds, basic glazing, sagger loading, tile setting and grouting. Individualized instruction by the staff allows each student to have a hands-on experience with many of the above processes. There will be an opportunity to tour Fonthill and the Tile Works and see a lecture/slide show on historic and contemporary tile installations.

Dates: Sign up for a 3-day workshop

March 27-March 29

Fee: \$250, Eight students accepted so sign up now!

Place: Moravian Pottery & Tile Works

Contact: Adam Zayas at 215-348-6001 or
azayas@co.bucks.pa.us

Apprenticeship

Apprentices work 24 hrs/week in exchange for an hourly wage. Participants learn various forming and reproduction techniques including tile/mosaic making, mold work, glaze application, sagger firing for controlled smoking of clay and concrete installation. They have an opportunity to produce their own original tile work using the standard materials and tools of the pottery, being exposed to a turn of the century knowledge based on the Arts & Crafts philosophy and aesthetics adhered to by the Moravian Pottery & Tile Works. Studio space in the Pottery is accessible to them between the hours of 5 a.m.-midnight, 7 days/week.. In addition, they receive free materials, use of tools, technical advice, and biweekly pay based on the work produced under the Pottery's direction.

APPLICATION GUIDELINES AND DATES

Applicants for the apprenticeship are required to submit the following:

1. Resume
2. Ten clearly labeled slides of recent work that will be retained by the pottery if the applicant is selected. Please include slide list.
3. Cover letter detailing the sort of interchange desired from the experience and why the Moravian Pottery & Tile Works is appropriate to your needs.
4. Two letters of recommendation.

Applications must be postmarked by the deadline date.

March 4 Deadline for June 4 to Aug 11, 2011

Completed applications should be mailed to:

Apprentice Program

Moravian Pottery & Tile Works

130 E. Swamp Road

Doylestown, PA 18901

For further questions, please check online

www.buckscounty.org/tileworks.aspx

215-348-6001 ext. 25; 215-345-1361 Fax

E-mail to: azayas@co.bucks.pa.us

Tile and Mosaic Classes

Moravian Pottery and Tile Works
130 Swamp Rd., Doylestown

Mosaics

Learn how real Moravian mosaic panels are made, from beginning to end! This intro class for beginners will explore making mosaics using the traditional techniques of the Tile Works. Students will be limited to a maximum 1 1/2 square foot mosaic. (e.g. 12" x 16") Classes meet weekly for 5 sessions from 9am – 12pm. \$190

Mosaic Making # 001 Sundays Jan 08—Feb 05
Mosaic Making # 002 Saturdays Mar 31—Apr 28

Cuenca Tiles

Ever notice the old Spanish wall tiles in the Fonthill Museum? Many are made using a 16th century technique that allows one to fill in colors to achieve an easily handpainted tile. Each student will make 4 (4" x 4") designs and press and glaze about 15 tiles. Classes meet weekly for 4 sessions from 9am – 12pm. \$150

Cuenca Tiles #003 Saturdays Jan 14- Feb 11
Cuenca Tiles #004 Sundays Feb 19 – Mar 11

Of Molds and Tiles

Learn how to make a plaster master mold and a production mold. Each student will produce about 20 glazed tiles of their design. These tiles will be dipped in glazes and not hand-painted. \$190

Molds #005 Saturdays Feb 25 – Mar 17
Molds #006 Sundays Mar 25–Apr 29 (no class 8/8, Easter)
Contact Adam Zayas at 215-348-6001; azayas@co.bucks.pa.us

*Classes subject to change—please check our website for updates.

Moonlit Hi-Tech Hunt

Peace Valley Park, Doylestown
Pavilion #1, Angler's Pier

\$25/person, ages 12-17

October 8 7:30 p.m.—9:30 p.m.

The *Geocaching Adventure Moonlit Hunt* pairs the excitement of a treasure hunt with modern technology. The event begins with an introduction to using a handheld GPS unit. After learning the basics of operating the GPS unit, GeoVentures Staff will lead the group in finding the first cache. From there, participants will work in small teams to navigate the course.

Flashlights and reflectors will be integral parts of the hunt. Participants should wear comfortable shoes and dress for activity and the weather.

In the event of inclement weather, GeoVentures Staff will contact you and discuss the event options.

This program is specifically geared for teens.
Register on page 19; Course #795

Bucks County Pumpkinfest

Moravian Pottery and Tile Works.
130 Swamp Rd., Doylestown

Oct. 15 and 16 Noon-9:00 p.m. both days
1 day pass for adults is \$5; \$3 for ages 2-12
2 day pass for adults \$8; \$5 for children 2-12

Now one of the region's premiere fall attractions, Bucks County Pumpkinfest will again be staged on the grounds of the Moravian Pottery and Tile Works within Fonthill Park on Swamp Road (Route 313), Doylestown. Featuring community booths, games, refreshments, activities, stage entertainment and the carving of gigantic pumpkins, the two-day event offers something for the whole family.

The event is presented by the Bucks County Council on Alcoholism and Drug Dependence in cooperation with the Bucks County Department of Parks and Recreation.

Parking is free. For more information, call the Council at 215-345-6644.



Tinicum Park Antiques Show

Tinicum Park Barn, River Rd (Rt. 32) Erwinna, PA
Saturday, Sept. 10 10:00 a.m. - 5:00 p.m.
Sunday, Sept. 11 11:00 a.m. - 4:00 p.m.

The 29th annual Tinicum Park Antiques Show will feature 32 dealers of quality antiques displaying their merchandise for sale in the historic 160 year old farm buildings of Tinicum Park with proceeds of the show earmarked for restoration work on the Parks Department's historic sites. The general flavor of the show is country primitive, with tables, chairs, chests, cupboards, paintings, hardware, textiles and collectibles filling the buildings and tents. An added attraction is the Tohickon Garden Club's annual flower show staged in the adjacent historic Erwin-Stover House.

The shows will be held rain or shine. A donation of \$5 (\$4 with this article) is suggested for the antiques show and \$1 for the flower show. Children are free. No dogs allowed. Food and refreshments will be available. For additional information, please call 267-337-0955

Historic Properties-Public Rentals

Located in Tinicum Park on River Road near Erwinna, the Tinicum Barn and the Erwin-Stover House are available for public and private rental events. Weddings, receptions, parties, business and organizational use are among the most popular approved rental applications.

Guidelines and fee information can be obtained by contacting the Office of Historic Properties: 215-348-6627 or cjyeske@co.bucks.pa.us.

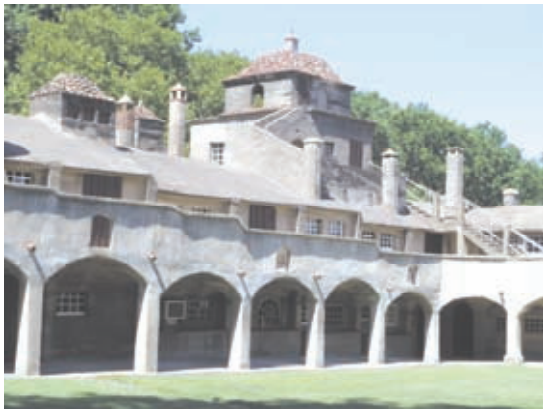


Historic Properties

The Moravian Pottery and Tile Works in Doylestown was founded by Henry C. Mercer in 1898 to produce decorative ceramic tiles and mosaics. Since 1967 the County has owned the current building, completed in 1912, and administers it as a “working history” museum through the Parks and Recreation Department. It continues to make reproductions of Mercer’s original mosaics and tiles in the Arts and Crafts style.

Guided tours and other programs are available, and the museum shop offers a wide variety of Arts and Crafts style tiles for purchase. Call the museum at 215-348-6090 for information about tours, programs, and tiles for sale.

The Stover Myers Mill (Bedminster Twp.) and Erwin Stover House (Tinicum Twp.) are open Friday-Sunday from noon-4:00 p.m., May thru October. Tours are free. For special tours or appointments, please call 215-348-6627.



Weisel Hostel

Weisel (Quakertown) is a former estate dating from the early 1900’s and is one of 4000 hostels worldwide. It is chartered by Hostelling International, Inc. and operated by the Department. Its purpose is to provide clean, safe, affordable accommodations for travelers. It is also available to groups with an educational, recreational, or service mission. The surrounding Nockamixon State Park offers an abundance of outdoor activities and amenities. Ecology and environmental clubs are encouraged to use the surrounding areas for hiking and study. The communal living arrangements at Weisel are typical of hostels throughout the world. Language clubs and international studies organizations planning to travel abroad will benefit greatly from this hostel experience. House parents are available to talk to groups about the hostelling mission in America and overseas and to share some of their own experiences.

The hostel accommodates up to 18 people, which includes sleeping accommodations. Overnight rates are \$17 per person per night/member, includes linens. Children ages 3+ pay \$7/night/member, includes linens. Memberships are \$28 for adults, or \$18 for seniors. Please call 215-536-8749 or visit us at www.buckscounty.org/visitors for additional information and reservations or if you are a non resident.

Bucks County Horse Park

The Bucks County Horse Park, part of the Bucks County park system, is a unique 100+ acre facility dedicated to the preservation of the natural environment for amateur equestrian pursuits. Located off Rt. 611 in Revere, PA, the Horse Park offers over 25 miles of maintained equestrian trails; several show rings; and a variety of events and competitions for all ages and disciplines of riding from April to November.

The Horse Park is managed for the Bucks County Department of Parks and Recreation by Bucks County Horse Park, Inc., a non-profit 501(c)(3) corporation and membership organization. For more information on membership, upcoming events and volunteer and spectator opportunities, visit the website: www.BucksCountyHorsePark.org or call 610-847-8597.

Van Sant Airport and Park

Travel back in time and experience the Golden Age of Flight at Van Sant Airport and Park. Located on Cafferty Road in scenic Erwinna, Van Sant offers rides and instructions in a number of styles of small planes and gliders. Freedom's Wings International, a therapeutic recreational program for paraplegic pilots, is locally based at the airport. At any given time, privately-owned vintage airplanes take off and land here. This is an ideal setting to spend an afternoon with family and friends, bring a picnic, go for a ride or enjoy the show. For information call 610-847-8444 or visit www.vansantairport.com



ATTENTION! SUMMER JOBS!

You may not have thought about Bucks County Parks and Recreation as a resource for summer jobs. Each year we look for qualified, enthusiastic people to work summers. If you know of someone young, old, or in between looking for a position for the summer, call one of the numbers below.

For jobs at Core Creek Boat Rental, Oxford Valley Pool, or Frosty Hollow Tennis Center:

Call the Recreation Supervisor, 215-757-0571 ext. 3311

For jobs at Peace Valley Park Boat Rental or Tohickon Valley Park Pool:

Call the Recreation Supervisor, 215-348-6625

Applications accepted beginning in January



Boat Rentals

Peace Valley Boat Rental (PVBR) in New Britain and Core Creek Boat Rental (CCBR) in Langhorne open the first Sat. in May to end of Sept. Call Peace Valley Boat Rental at 215-345-1097, or Core Creek Park Boat Rental at 215-757-1225, during the May to early Oct. season. You may also call the Administrative Office at 215-757-0571 for further details.

Boat Rental Fees	1/2 Hr	1 Hr	1/2 Day	Day
Rowboat	\$10	\$15	\$40	\$60
Canoes	10	15	40	60
Paddleboat	10	15	40	60
14' Sailboat (PVBR)		25	80	120
Aqua Finn Sailboat (PVBR)		20	50	90
Aqua Cycles (CCBR)	15	20		
Kayak (single)	10	15	40	70
Kayak (double)	12	17	45	80

Rentals require \$20 cash deposit or credit card plus a valid driver's license.



Cabins, Camping Pavilions, Picnic Areas

Contact us for information about renting camp sites, cabins, pavilions, and picnic areas. We will be happy to answer questions about available dates, locations, maps, facilities, how to obtain a permit, fees, and policies. Most arrangements can be made conveniently by telephone. See also p. 3, **"Park Information,"** about where to call.

Cabins—Tohickon Valley Park has 4 cabins available to rent for your camping enjoyment. Fees are charged by the week or weekend, plus a fee for each additional night. Rentals run from Jan. 15 to Dec. 15.

Camping—Several county parks have wooded camping grounds where you may bring your own tent or camper and camp at a designated site. Parks with designated sites include Lake Towhee, Tinicum Park (tent camping only), and Tohickon Valley Park. Fees are charged per day for family campsites, which accommodate a maximum of 6 people. Fees are charged per person for group campsites, which accommodate 10 or more people.

Pavilions and/or Picnic Areas—Rent a pavilion or wooded picnic area in any of our parks for all occasions such as family reunions, birthday parties, company picnics, etc. Pavilions and picnic areas are available for rental in Core Creek, Playwicki, Silver Lake (pavilion only), Tinicum, Lake Towhee, Tohickon Valley, and Peace Valley Parks. Fees vary for residents and nonresidents, and for private versus nonprofit groups and size of the pavilion.



Oxford Valley Golf Course

<u>Greens Fees</u>	<u>Fee</u>
Non-member	\$12.00
<u>Memberships</u>	
Senior 60+	\$40.00
Senior couple both 60+	55.00
Junior 14-17	35.00
Individual	65.00
Family-husband & wife	100.00
Each child 14-17 with family	20.00

Greens Fee Plan Discount Monday-Friday
7:00 a.m. - 2:00 p.m., except Holidays

Individual	\$7.00
Students with Family or Junior Seniors	5.50
Seniors	5.50
Organizations affiliated with the Golf Course	5.50

Oxford Valley Golf Course is open March through Dec.



Swimming

Oxford Valley Pool (OVP), located in Fairless Hills, is a 50-meter pool with a maximum depth of 4 ft. 3 in. It features a water slide and small wading pool for children with a depth of 1 ft. 6 in.

Tohickon Valley Pool (TVP) is situated in a wooded park setting in Point Pleasant. The main pool ranges in depth from 3 ft. to 5 ft 6 in., while the children's pool is a maximum of 1 ft. deep.

Each pool offers swim programs for children. Both county and non-county residents may obtain season passes or pay by the day. Fees vary for residents and non-residents, by age and day of week.

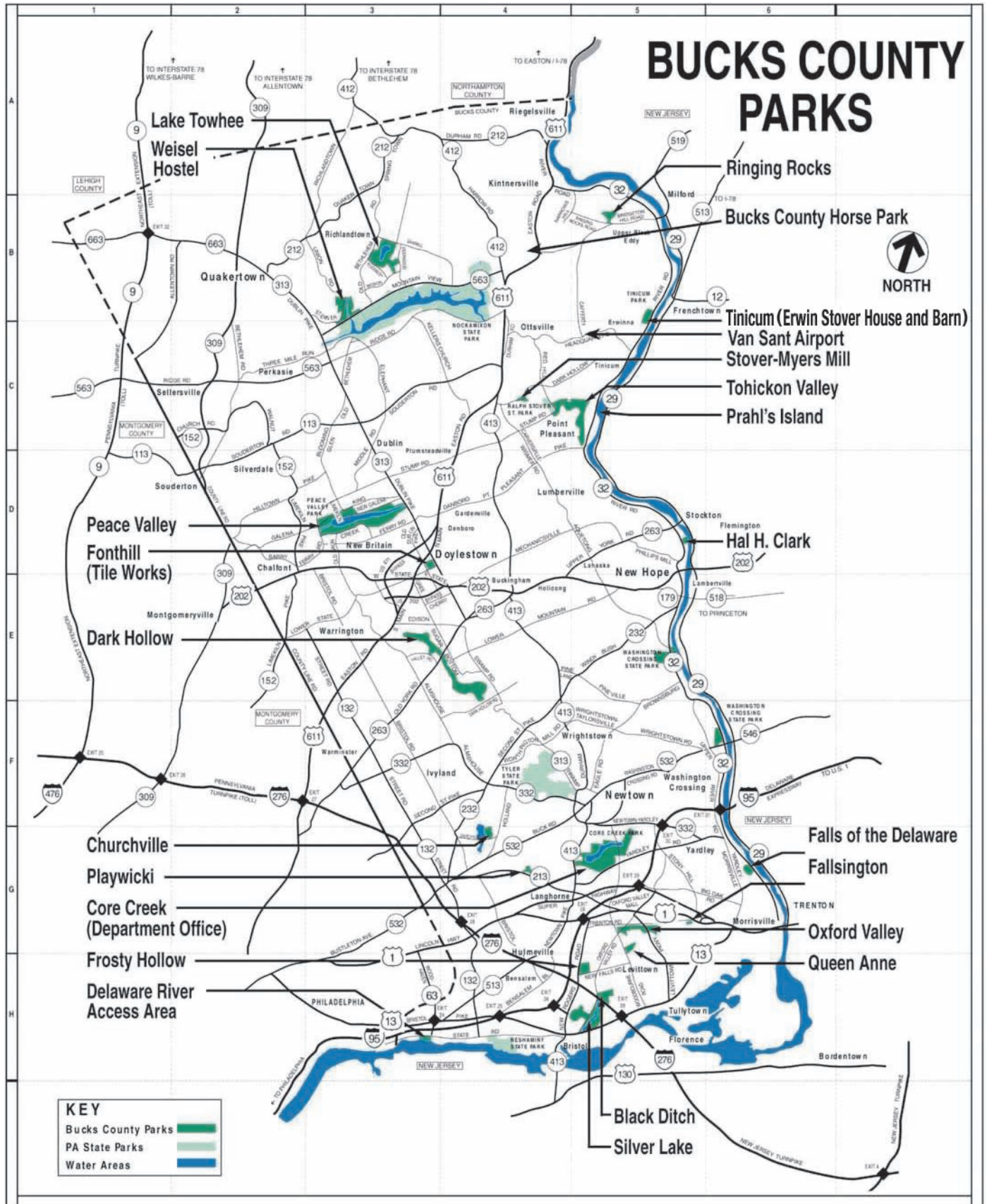
For further information about fees, hours, and programs, contact the pools during the Memorial Day to Labor Day season:

OVP- 215-949-2975

TVP- 215-297-0754

You may contact the Administrative Office with questions about the pools during the off-season at 215-757-0571.

	<u>Bucks Residents</u>	<u>Nonresidents</u>
OVP Season Pass	\$40-60	\$80-120
OVP Daily Pass	\$5.00-5.75	\$9.50-11.00
TVP Season Pass	\$30-50	\$50-90
TVP Daily Pass	\$4.00-4.50	\$7.50-9.00



	Playgrounds	Picnicking	Hiking	Ball Fields	Tennis	Swimming	Horseback Riding	Boating	Fishing	Camping	Nature Areas	Historic Features	Golf Course	Restrooms	Misc.
C5 Van Sant Airport (188.5 acres) Erwinna, Cafferty Rd.		■												□	
B4 Bucks County Horse Park (124.8 acres) Riegelsville, Easton Rd.						■								□	
H4 Delaware River Access Area (108 acres) Bensalem Township, at Andalusia, on Station Ave.								□	□					□	
H5 Silver Lake Park (465 acres) Bristol Township, US RT 13 & Bath Rd.	□	□	□						□		□			□	O,* V
H5 Black Ditch (117 acres) Bristol Township, Mill Creek Rd. & Bloomsdale Rd.	□														
H5 Frosty Hollow (95 acres) Levittown, on Newportville-Fallsington Rd., 1.4 mile east of Rt. 413					□									□	
G5 Queen Anne (276 acres) Middletown, Bristol Township, on New Falls Rd.				□											
G5 Oxford Valley Park (220 acres) Falls Township, at the intersection of Hood Blvd. & Oxford Valley Rd.						□			□			□			O
G5 Core Creek (1200 acres) Middletown Township, south of Newtown, east on Rt. 413 on Tollgate Rd. Enter also from Bridgetown Pike west of Langhorne-Yardley Rd.	□	□	□	□	□			□	□		□			□	O, B
G4 Playwicki (33 acres) Middletown Township, on Maple Ave. (Rt. 213) west of Langhorne	□	□	□						□					□	
G4 Churchville (172 acres) Northampton Township, north of Holland at the Churchville Reservoir			□								□			□	g, V, *
E4 Dark Hollow (770 acres) Linear park bordering Neshaminy Creek, Warwick Township access from Old York Rd. (Rt. 263)									□						U
D5 Hal H. Clark Park (72 acres) Located on River Rd. (Rt. 32) 1 mile south of Center Bridge															U
D3 Moravian Pottery & Tile works, Fonthill (77 acres) Doylestown, 130 Swamp Rd. (Rt. 313) 1/2 mile east of Rt. 611		■									□	□		■	T*
D3 Peace Valley (1500 acres) New Britain Township, 3 miles north of Doylestown to the west of Rt. 313 on Creek Rd.	□	□	□	□				□	□		□			□	B, O*, V
C5 Tohickon Valley (612 acres) Tinicum Township, 1 mile north of Pt. Pleasant on Cafferty Rd.	□	□	□			□			□	□				□	G, o
C4 Stover-Myers Mill (26 acres) Bedminster Township, on Dark Hollow Rd., 1 mile east of Pipersville		□							□		□			□	T
C5 Tinicum (126 acres) Tinicum Township, on River Rd. (Rt. 32) just north of Erwinna	□	□	□	□				□	□	□		□		□	T
B3 Weisel Hostel (8 acres) East Rockhill Township, about 1 mile north of Nockamixon on Richlandtown Rd.			□						□		□			□	g
B3 Lake Towhee (549 acres) Haycock Township, east of Applebachsville on Old Bethlehem Rd.	□	□	□	□				□	□	□				□	
B5 Ringing Rocks (65 acres) Bridgeton Township, about 2 miles west of Upper Black Eddy		□	□								□				G
G6 Falls of the Delaware (125 acres) River Road, Lower Makefield Township															U
H5 Fallsington Park (17 acres) Intersection of Tyburn & Trenton Roads															U
C5 Prah's Island (88 acres) Situated on the Delaware River in Tinicum Township 1 mile north of Point Pleasant								□	□						U

Key: G—Geological Formation M—Multi Use Court •—Tent/Trailer o—Cabin Lodge T—Tour
 U—Undeveloped * —Programs Available B—Boat Rental O—Bikeway/Walkway g—Group V—Visitor Center



BUCKS COUNTY HORSE PARK

Easton Road
Revere, Pa 18953
(610) 847-8597
manager@buckscountyhorsepark.org

CHURCHVILLE NATURE CENTER

501 Churchville Lane
Churchville, PA 18966
215-357-4005
Center and Shop open Tues. through
Sun. 10 a.m. to 5 p.m.
www.churchvillenaturecenter.org.

CORE CREEK PARK (Administrative Office)

901 E Bridgetown Pike
Langhorne, PA 19047
215-757-0571
Open Mon. through Fri.
8 a.m. to 4:30 p.m.
www.buckscounty.org

CORE CREEK PARK BOAT RENTAL (Seasonal)

Core Creek Park
Langhorne, PA
215-757-1225
Open first Saturday in May through end
of September

FROSTY HOLLOW TENNIS CENTER (Seasonal)

New Falls Road
Levittown, PA
215-949-2280
Open May through October.
Hours vary.

LAKE TOWHEE PARK

Old Bethlehem Rd.
Applebachsville, PA
Call the Administrative Office for Park
information 215-757-0571.
camping

MORAVIAN POTTERY AND TILE WORKS

130 Swamp Road
Doylestown, PA 18901
215-345-6722
Open Daily
10 a.m. to 4:45 p.m.
<http://www.buckscounty.org/visitors>

OXFORD VALLEY GOLF COURSE

Oxford Valley Road
Levittown, PA 19030
215-945-8644
Open Mar. 1 through Dec. 31
Mon. through Sat. 7 a.m. to dusk;
Sun. 6:30 a.m. to dusk.
Closed January and February.

OXFORD VALLEY POOL (Seasonal)

Hood Blvd
Fairless Hills, PA
215-949-2975
Open Memorial Day Weekend through
Labor Day.
3 p.m.-8 p.m. when Pennsbury Schools
are in session;
12 p.m. to 8 p.m. remainder of the sea-
son.

PEACE VALLEY PARK

Creek Road
New Britain Twp, PA
Open daily 8 a.m.-sunset. Call the
Administrative office for Park
information 215-822-8608

PEACE VALLEY BOAT RENTAL (Seasonal)

Creek Road
New Britain Twp, PA
215-345-1097
Open first Saturday in May through first
Sunday in Oct.

PEACE VALLEY NATURE CENTER

170 Chapman Road
Doylestown, PA 18901
215-345-7860
Solar building and Sunflower Shop
open Tue. through Sun.
10 a.m. to 5 p.m.
Trails open daily dawn to dusk.
www.peacevalleynaturecenter.org

PLAYWICKI PARK

Maple Avenue
Langhorne, PA
Call the Administrative Office for
information 215-757-0571.

SILVER LAKE PARK

Bath Road
Bristol Township, PA
Call the Administrative Office for
information 215-757-0571

SILVER LAKE NATURE CENTER

1306 Bath Road
Bristol, PA 19007
215-785-1177
Center and Shop open daily Tue. through
Sat. 10 a.m. to 5 p.m.,
And Sun. Noon to 5 p.m.
www.silverlakenaturecenter.org

TINICUM PARK

River Road (Rte 32)
Upper Black Eddy, PA
Call the Administrative Office for
Information 215-757-0571
camping

TOHICKON VALLEY PARK AND POOL (Seasonal)

Cafferty Road
Point Pleasant, PA
Call the Administrative Office for Park
information 215-757-0571,
Pool Tel. 215-297-0754,
Pool opens Memorial Day Weekend of
each year. Daily operation, 7 days a
week, begins mid-June until Labor Day.
Hours: 12 noon to 6:30 p.m.
Camping and cabins

VAN SANT AIRPORT

Cafferty Road
Erwinna, Pa 18920
(610) 847-8444

WEISEL HOSTEL

7347 Richlandtown Road
Quakertown, PA 18951
215-536-8749
Open daily 7 a.m. to 9 a.m.,
and 4 p.m. to 9 p.m.
Closed Dec. 25 to Jan 1 of every year
Part of worldwide hostel network.
www.buckscounty.org
www.hiayh.org



Important Registration Information

COMPLETING THE REGISTRATION FORM

- Use the registration form *only where indicated under program information.*, e.g., for all camps, most classes, tennis leagues, and all bus tours.
- Be sure to include all participant information on the form, including participant name(s), address, age school (children and youth only) and telephone numbers.
- Be sure to include all program information requested on the registration form, including program name, number, session number, date and fee for each participant.
- Each participant may register for more than one program on the form. Just list each program separately.
- Indicate payment type and amount enclosed at the bottom.
- Don't forget to sign the waiver on the bottom! Each adult participant listed on the registration form must sign the waiver; parent or guardian signs for children.
- Don't forget your payment!

DETAILS

- Call the facility or the Core Creek Park Office to check on program availability, new programs, or new sessions opening as the class start date nears. Register early.
- Registrations are accepted on a first-come basis only. A completed registration form with signed waiver and full payment together are required for registration. Otherwise it will be returned for further information.
- Even if the course is free, send in a completed registration form with signed waiver. A signed waiver is always required.

- We are unable to “hold” space in a class without a registration form, signed waiver, and payment.
- Registration generally closes one week before class begins unless otherwise indicated. Check with the facility regarding late registrations.
- Registrants will be placed on a program roster and called one to two weeks before the program start date to re-confirm and review what to bring, directions, etc. There are no registration confirmations or tickets issued.
- Make checks payable to Bucks County Parks.

PAYMENT METHODS

For lower Bucks programs:

- *In person*—Cash, Check, or Credit Card only at the Core Creek Park Administrative Office in Langhorne. Registration for tennis programs accepted at Frosty Hollow, and for pool programs (except credit cards) at Oxford Valley after opening.
- *By mail* — Check or Credit Card only
- *By fax* — Credit Card only

For central and upper Bucks programs:

- *By mail* — Check or Credit Card only
- *By fax* — Credit Card only

Telephone registrations are NOT accepted for either Upper or Lower Bucks Programs.

We accept VISA/MC

CANCELLATIONS, REFUNDS

- The Department reserves the right to cancel a program due to insufficient registration. So register early!
- There are NO REFUNDS, unless the Department cancels a class, in which case a refund will be issued.
- The instructor arranges makeup dates with the class.

Walking/Hiking Throughout Our Parks System

All of our parks have trails of one sort or another. Many are the result of fishermen who have carved permanent paths along the banks of our lakes. Others have been used by horses and still others are from people looking for an off-beaten trail that affords them a closer view at nature.

We ask that everyone who enjoys our natural trails to please keep them clean and take out whatever you take in, leaving only your footprints. Remember that we are not alone in our parks. Many animals take advantage of the quiet banks or make our forests their home. The animals are likely to take our ‘trash’ as food and swallow fishing hooks or even plastic bags. The parks belong to everyone and every creature.





Registration Form

19

For Lower Bucks programs and bus tours, mail, fax*, or drop off to:

Recreation Supervisor, Bucks Co. Parks & Recreation
901 E. Bridgetown Pike, Langhorne, PA 19047
Tel: 215-757-0571, ext. 3311
Fax*: 215-752-1421 (with MC/Visa)

For Nature Center and Moravian Pottery & Tile Works programs, contact these facilities directly. See p. 7-11 on how to contact them.

For Upper Bucks Programs, mail or fax* only (no drop-ins) to:

Recreation Supervisor, Bucks Co. Parks and Recreation
510 Creek Rd, New Britain, PA 18901—no “drop-bys”
Tel: 215-489-5132
Fax*: 215-230-7829 (with MC/Visa info)

Adult Name _____

Address _____

City/Town _____ State _____ Zip _____

Tel. (Day) _____ (Eve) _____ (cell) _____

Emergency Contact _____ Relationship _____ Tel _____

For Tennis Leagues: Rating _____ Member No., if applicable: _____ E-mail _____

ALL INFORMATION MUST BE COMPLETED

NO REFUNDS

List all Participants-First & Last Name	Youth Only:	Full Program/Event Name	Session	Date &	Fee
Registration form <u>MUST</u> include waiver signature(s) below to be valid				Total Fee:	

Since I, my son/daughter are participating in this program voluntarily and at my own/son's/daughter's risk, I agree not to sue or hold liable the County of Bucks, the Department of Parks and Recreation or any of its representatives, and/or individual instructors responsible for any injury or damages to me/my son/daughter resulting from participation in this/these programs. The Bucks County Department of Parks and Recreation and its representatives have my permission to arrange transportation to a licensed physician or medical facility. I grant my permission for a licensed physician to provide any medical care or treatment this physician deems necessary to myself/son/or daughter.

Signature of all Adult Participant(s)/Parent or Guardian of Child

Print: _____

Relationship: _____

Date: _____

**** Registration not valid without signature(s) on this waiver****

Indicate the amount & method of your payment:

Cash Amt _____ Check Amt _____ # _____

Check made out to Bucks County Parks

VISA/MASTERCARD (circle one) Amt _____

Card # _____

Exp. Date _____

Signature _____

Print Cardholder's Name: _____

Below for Office Use Only:

Staff Initials _____ **Date processed** _____

Bucks County Department of Parks and Recreation
901 East Bridgetown Pike, Langhorne, Pennsylvania 19047
Tel: 215-757-0571 Fax: 215-752-1421
Email: parksandrecreation@co.bucks.pa.us
Website: www.buckscounty.org

PRSR STD
US Postage
PAID
Doylestown, PA
Permit No. 264

Frequently Asked Questions

Often, we get asked the same questions about certain issues in our parks. Here, we will begin to answer some of these questions. We hope this helps those of you who are curious and want to know more about the parks. And in turn, YOU, can help others and become our 'ambassadors', not to mention looking good with the right answers!

1. **What is considered the opening and closing time for the county parks?** We are open 8:00 a.m. to sunset, generally twilight for sunset or when the sun falls below the horizon is when the parks close. If you want exact times, please check this website: <http://www.sunrisesunset.com/> Please also note that this changes daily.
2. **What kind of permit constitutes a 'Special Use'?** If you are having anything other than a picnic such as a vendor, caterer, entertainer of any sort like a moon bounce, DJ, face painter, etc. at your event, or are using pavilion #11 at Core Creek Park, you will need to request a 'Special Use Permit Application'. All rules and insurance requirements are included in the packet. A regular picnic rental may be reserved over the phone by calling 215-757-0571
3. **Is swimming permitted in a county park?** No, it is not, as there are no designated swimming areas nor anyone to supervise the areas
4. **Is alcohol permitted in the county parks?** Generally, alcohol is not permitted in the parks unless special permission has been obtained through a 'Special Use Application' and there are strict guidelines to follow.
5. **How can I register my dog for the Off Leash Dog Area at Core Creek?** Log onto our county website and click on Core Creek Park for questions and procedures www.buckscounty.org. You MUST appear in person to register your dog. Please note that if your dog exhibits any kind of aggressive behavior, even if only once or twice, it will not be registered for the dog park, or you may lose your privilege to use the off-leash dog area.
6. **Why do dogs and pets have to be on a leash in our county parks?** For security, safety, and protection of our wildlife, other animals, and humans. Pets are personal property and you are responsible for any damage they cause. A leash is the best way to control your pet.