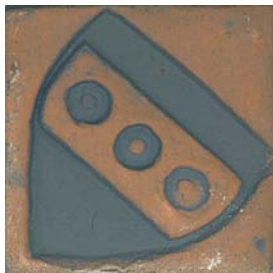


# Glaze Colors and Surfaces

Most decorative tiles are available in the following glaze colors. The raised portion of the design will always be in unglazed Brick-Red with the specified color in the recessed portion of the tile. These tiles may be used for floors or walls.

## Matte, unglazed colors



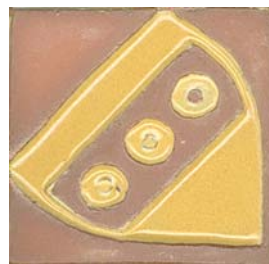
MATTE BLUE (BLSL)



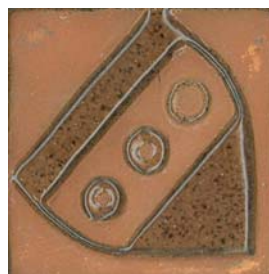
MATTE GREEN (GRSL)



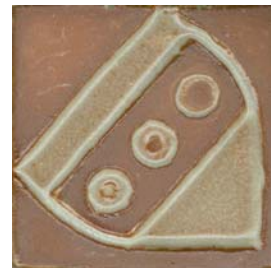
GREEN GLAZE (GRGZ)



YELLOW GLAZE (YWGZ)



BROWN GLAZE (BRGZ)



WHITE GLAZE (WTGZ)



BLACK GLAZE (BKGZ)



BLUE GLAZE (BLGZ)

## Semi-Gloss glazes

If you prefer a completely glazed semi-gloss surface, then the following colors are for you! You may order tiles completely in Cream or in the color combinations shown with cream below. Colors cannot be combined other than as illustrated. These tiles are best for walls.



CREAM (CROR)



BLUE AND CREAM (BLUG)



BROWN AND CREAM (BKUG)



GREEN AND CREAM (GRUG)