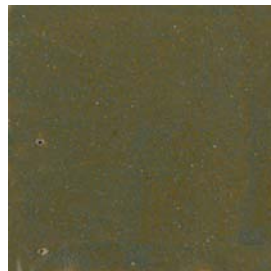


Glaze Colors and Surfaces



The founder and builder of the Moravian Pottery and Tile Works, Henry Chapman Mercer said “Machinery can’t make Art! Art needs the touch of a human hand, its failings as well as its skill”. In keeping with his philosophy we use a local clay that we dig and prepare ourselves. It is characterized by its natural variation in color, surface, shrinkage, and texture. Our effort has been to accept all of these delightful variations. We don’t attempt to produce uniform tiles all alike in color and surface. We acknowledge that to be the domain of machinery. Our goal is to make a tile art reflective of the maker’s touch and skill as well as of the directness of processes used. We hope you enjoy our tiles .

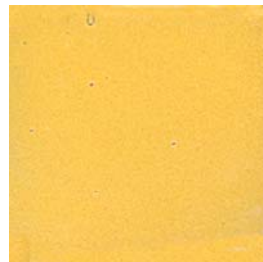
Semi-Gloss glazes



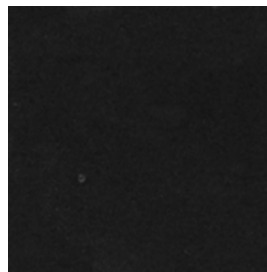
Green Glaze (GRGZ)



White Glaze (WTGZ)



Yellow Glaze (YWGZ)



Black Glaze (BKGZ)

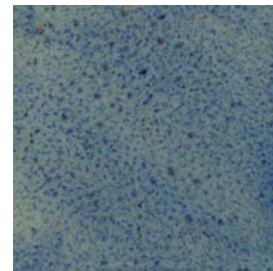


Brown Glaze (BRGZ)



Blue Glaze (BLGZ)

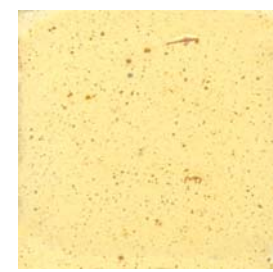
Semi-Gloss glazes



Blue Underglaze (BLUG)



Black Underglaze (BKUG)



Cream Glaze (CROR)



Green Underglaze (GRUG)

Matte , non-glossy surfaces



Matte Blue (BLSL)



Matte Green (GRSL)

**Not intended for floor use, exteriors,
pools nor showers**

**Not intended for floor use, exteriors,
pools nor showers**